



CRAB APPLE ACTIVITY SUITE

HOW WELL DO YOU KNOW THE COLOURFUL CRAB APPLE?



Crab apple tree in full bloom



Crab apple flower



Crab apple fruit

A. First, try your hand at labelling the parts of the crab apple flower!

Crab apple flowers (blossoms) have five petals with stamens that produce copious pollen, and a half-inferior ovary, and are found clustered in corymbs.

Diagram for labeling the parts of a crab apple flower. The diagram shows a cross-section of the flower with arrows pointing to various parts. To the right of the diagram are several empty boxes for labeling. A legend on the far right lists the parts: Anther, Filament, Ovary, Petal, Pistil, Sepal, Stigma, Stamen, and Style.

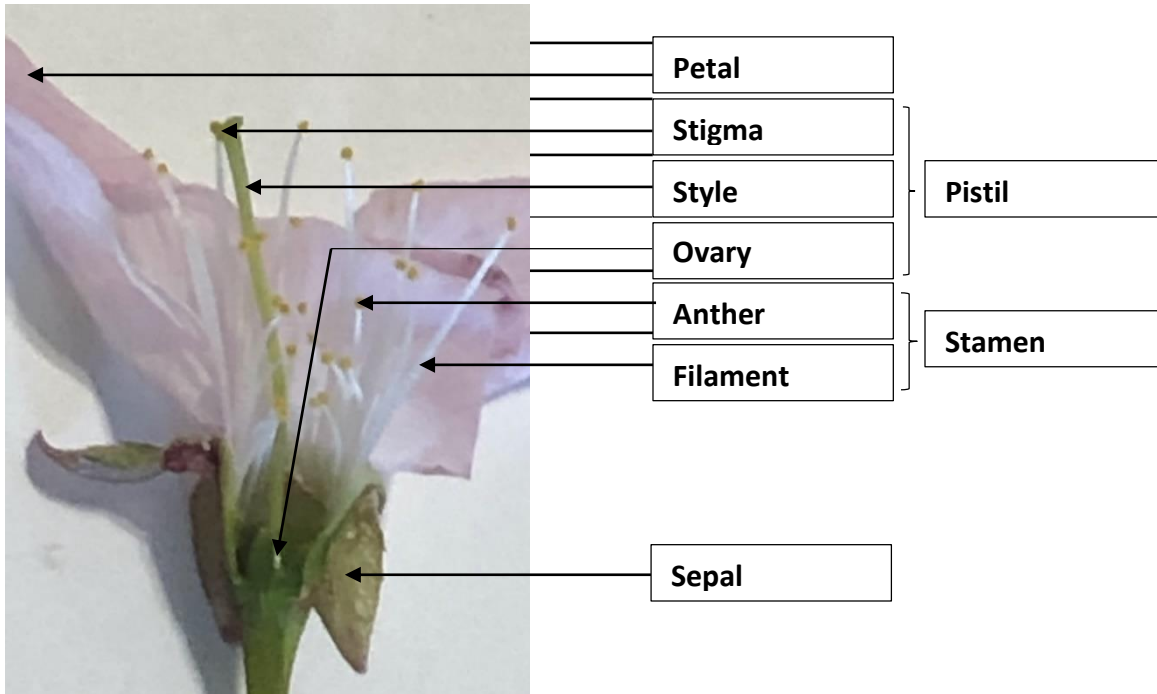
B. Crab Apple Quiz

1. What different colours are the blossoms of crab apple trees?
2. How tall do crab apple trees grow?
3. What does the fruit of a crab apple tree look like and can you eat it?
4. What is often made with crab apples?
5. What conditions has traditional medicine used crab apples to treat?
6. Why are crab apple trees sometimes planted in apple orchards?



CRAB APPLE ACTIVITY SUITE ANSWER KEY

A. Crab Apple Flower (Blossom) - Labelled



B. Crab Apple Quiz – Answers

1. Crab apple blossoms range from white to light pink or dark pink.
2. Crab apple trees can grow up to 12 meters depending on the species and the growing conditions.
3. Crab apples look just like regular apples, only smaller. Yes, they can be eaten but they tend to be much more tart due to their higher malic acid content and the apples of some species also tend to be woody. Note also that the leaves are poisonous.
4. Crab apples are an excellent source of pectin and are often used to make jellies and preserves. Crab apples are also sometimes used to augment the flavour of apple cider.
5. Traditional medicine has used crab apples to treat gout, fever, indigestion, inflammation and constipation.
6. Crab apple trees are sometimes planted in apple orchards because of their long flowering period and their abundant pollen which provides an extra source of pollen for the fertilization of the neighbouring apple trees.