



2019 Annual Report

Building an army of citizen scientists who can monitor, measure, mitigate and adapt to the local impacts of climate change in their own communities.



Our Approach

Use long-term monitoring protocols to evaluate changes in biodiversity and share the data.

Community involvement is crucial to address the issue of adaptation to our changing climate.

Everyone can learn about current issues and what ecological actions they may undertake.

President's Report

Alice Casselman, B.Sc., M.Sc. Ed.

The Association for Canadian Educational Resources (ACER) is a not for profit. This year we worked with Arab Community Centre of Toronto (ACCT), Parkdale Intercultural Association (PIA), and Working Women Community Centre (WWCC) through funding from the Toronto Parks and Trees Foundation (TPTF) to plant and measure trees and shrubs. We worked with the Toronto Region Conservation Authority (TRCA) to plant and measure trees at Rowntree Mills Park with middle school students.

We had a student Canada Summer Jobs student. Interns from the University of Toronto Mississauga completed research papers on our Riparian Rangers and Go Global programs. Sheridan College interns completed tree inventories on two campuses, We are thankful for all our hardworking volunteers, supporters, partners, and funders who made 2019 a success.

PROGRAM UPDATES

Toronto Parks and Trees Foundation (TPTF)

ACER began working with three organizations that received funding from the Toronto Parks and Trees Foundation to plant trees. ACER worked with the Arab Community Centre of Toronto to plant and measure 25 trees and/or shrubs at 3 sites.

The first of these sites, Saint Maria Goretti Catholic School and Saint Maria Goretti Parish, was planted in fall 2018. The remaining two sites, Scarborough Muslim Association and Northacres (Toronto Community Housing) was planted in spring 2019. Volunteer students planted 25 Eastern White Cedar at Scarborough Muslim Association. At Northacres, student volunteers planted 12 Canada Yew and 13 Red Osier Dogwood. The shrubs were tagged, mapped, and measured.

ACER also began work with the Parkdale Intercultural Association. We delivered 8 workshops to teach people in that community why we plant and measure trees and how to do so. The PIA distributed 420 trees and shrubs to the Parkdale community in 2019.

ACER also partnered with the Working Women Community Centre to deliver 5 workshops on planting, measuring and maintaining trees and shrubs. WWCC distributed 250 trees and shrubs to the community in 2019.

Project reports for all three projects are available on the ACER website.



Rowntree Mills Park Planting

On October 22, 2019, ACER worked with the Toronto Conservation Authority to plant 75 trees and shrubs at Rowntree Mills Park. TRCA taught students from Humber Summit Middle School and North Kipling Junior Middle School to plant the trees and shrubs. ACER taught the students how to tag, map, and measure the trees.

Edith George organized the planting in cooperation with the TRCA and the City of Toronto to increase the plant cover in the flood plains along the Humber River to decrease erosion. Sixteen species of trees and shrubs were planted.



ACER Interns

In 2019, ACER had interns from Sheridan College and the University of Toronto Mississauga. Ashpinder Kaur, Manpreet, Ravneet Kaur, Rupinderjit Kaur, Sarvi Sayal, and Baghel Singh from the Sheridan College Environmental Control graduate certificate program completed inventories of the Sheridan College Davis and Trafalgar campuses.

Leesha Birdi from the University of Toronto Biology program wrote a report on soil sample analysis. Tyler Orsulak from the UTM Geography program remeasured Go Global plots. Julia Bilas from the UTM Geography program started measuring trees on the UTM campus to compare them to benchmark measurements taken in a previous year.

2019 HIGHLIGHTS

Planting for Change (P4C)

In Spring 2019, ACER added Nelson Mandela to our Planting for Change network. Students from grades 2 to 5 planted 16 trees and 45 shrubs. The 16 trees consisted of 3 of each of our indicator species (Sugar Maple, Basswood, Bur Oak, Hop Tree, White Spruce) and a commemorative Red Maple.

56 Number of Schools



In the Planting for Change program (P4C)

Sheridan College Inventories

In 2019, five interns (Ashpinder Kaur, Manpreet, Ravneet Kaur, Rupinderjit Kaur, Sarvi Sayal, and Baghel Singh) from Sheridan College did inventories of the Sheridan College Davis and Trafalgar campuses and compared their data to previous measurements. They used their analysis to make recommendations about what species should be planted on each campus in the future.

They recommended Silver Maple, Sugar Maple, and Northern Catalpa for the Davis campus and Red Maple, Red Mulberry and Silver Maple for the Trafalgar campus. They also noted any problems they saw such as symptoms of insufficient water for trees on the Davis campus

150 Trees and Shrubs Measured



Trafalgar Campus

218 Trees and Shrubs Measured



Davis Campus

Go Global (GG) - Warton

Our intern from the University of Toronto Mississauga, Tyler Orsulak, remeasured three quadrats in the Go Global plot at Warton and compared them to past measurements. The plot had a previously been measured in 2004 and 2009. His goal was to determine if there were any shifts in the total tree population and growth rates of species.

A previous report found that between 2004 and 2009 eleven trees had died in the three quadrats. Between 2009 and 2018 thirty-three trees had died in the three quadrats. This represents about 3% of the total population. Sugar Maple showed the largest decline. Between 2009 and 2018 Sugar Maple went from accounting for 79% of the total trees in 2009 to 77% in 2018.

However, Sugar Maple still dominates these quadrats. Some Basswood, White Birch, Ash, and Ironwood trees were also lost.

152 Trees and Shrubs Measured



Warton Go Global Plot

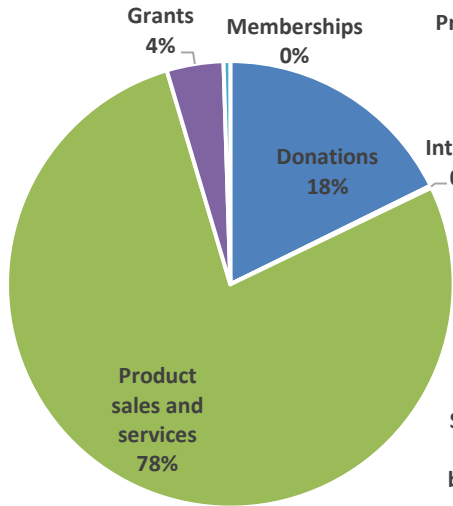
Riparian Rangers – Soil Sampling

Our University of Toronto Mississauga intern, Leesha Birdi, analyzed soil sample results from two Riparian Rangers projects (Raisin and Central Lake), and researched how to interpret these results. She found that soil samples taken for both projects had high amounts of magnesium and potassium, and low amounts of manganese and zinc.

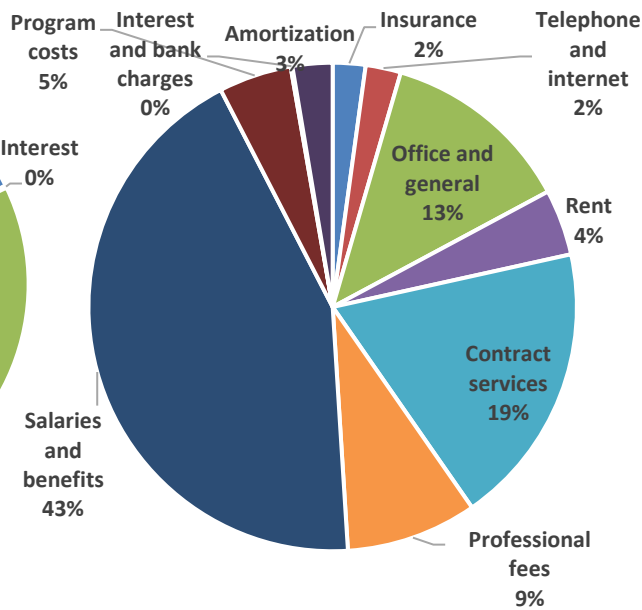


5 Soil Nutrients Analyzed

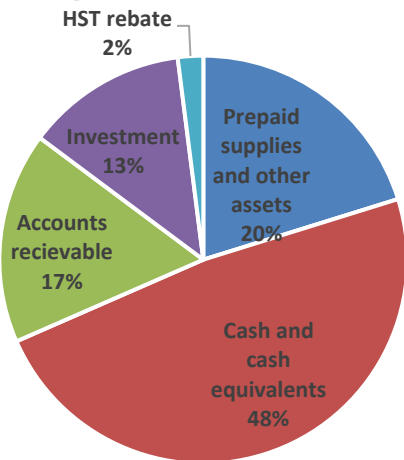
2019 Total Revenue: \$72,773.00



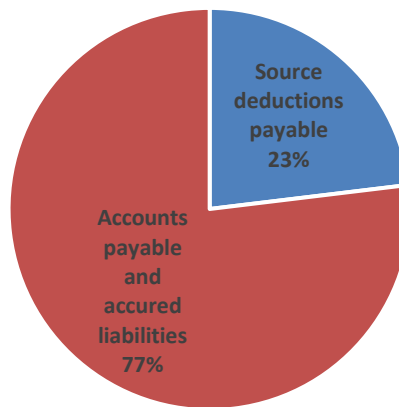
2019 Total Expenses: \$94,649.00



2019 Capital Assets: \$86,618.00



2019 Liabilities and Net Assets: \$3,366.00



The condensed financial statement was prepared by William Molson, CPA, CA.

Board of Directors 2019

- Alice Casselman
- Dana Ghadban
- Steve Laundrye
- Kasey Livingston
- Madelyn Webb
- Sonya Wieler

Special Thanks

We would like to give special thanks to our interns from Sheridan College; Ashpinder Kaur, Manpreet, Ravneet Kaur, Rupinderjit Kaur, Sarvi Sayal, and Baghel Singh, as well as Tyler Orsulak and Leesha Birdi our interns from the University of Toronto Mississauga. We wish them the best in their future endeavors.

We would also like to thank our project partners Working Women Community Centre, Parkdale Intercultural Association, and the Arab Community Centre of Toronto.

Thank you!



12 Helene Street North, Unit 1003
 Mississauga, ON L5G 3B5
 Phone: 905-601-7685
 Email: aceracreinfo@gmail.com
www.acer-acre.ca

